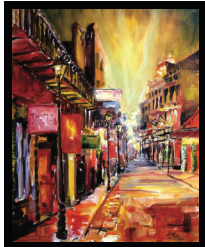


SINCE  1989

*Fess Parker*



## THE BIG EASY

2016 RHÔNE STYLE RED  
Santa Barbara County

“ Rich, powerful and flamboyant to its core the Big Easy hits the palate with tremendous fruit intensity. Super-ripe red cherry, raspberry jam, white chocolate, vanillin and new American oak shape this opulent Syrah/Petite Sirah/Grenache blend...simply outrageously delicious.”

Antonio Galloni's  
**vinous**

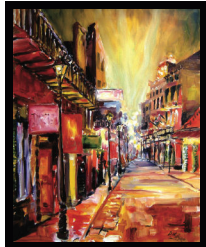
**95**  
POINTS

**SENSUOUSLY RICH.**  
**VIBRANT. LIVELY.**  
**PLENTY OF SPICE...**

...JUST LIKE THE CITY  
IT'S NAMED AFTER.

SINCE  1989

*Fess Parker*



## THE BIG EASY

2016 RHÔNE STYLE RED  
Santa Barbara County

“ Rich, powerful and flamboyant to its core the Big Easy hits the palate with tremendous fruit intensity. Super-ripe red cherry, raspberry jam, white chocolate, vanillin and new American oak shape this opulent Syrah/Petite Sirah/Grenache blend...simply outrageously delicious.”

Antonio Galloni's  
**vinous**

**95**  
POINTS

**SENSUOUSLY RICH.**  
**VIBRANT. LIVELY.**  
**PLENTY OF SPICE...**

...JUST LIKE THE CITY  
IT'S NAMED AFTER.

SINCE  1989

*Fess Parker*



## THE BIG EASY

2016 RHÔNE STYLE RED  
Santa Barbara County

“ Rich, powerful and flamboyant to its core the Big Easy hits the palate with tremendous fruit intensity. Super-ripe red cherry, raspberry jam, white chocolate, vanillin and new American oak shape this opulent Syrah/Petite Sirah/Grenache blend...simply outrageously delicious.”

Antonio Galloni's  
**vinous**

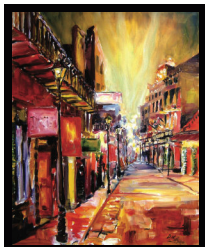
**95**  
POINTS

**SENSUOUSLY RICH.**  
**VIBRANT. LIVELY.**  
**PLENTY OF SPICE...**

...JUST LIKE THE CITY  
IT'S NAMED AFTER.

SINCE  1989

*Fess Parker*



## THE BIG EASY

2016 RHÔNE STYLE RED  
Santa Barbara County

“ Rich, powerful and flamboyant to its core the Big Easy hits the palate with tremendous fruit intensity. Super-ripe red cherry, raspberry jam, white chocolate, vanillin and new American oak shape this opulent Syrah/Petite Sirah/Grenache blend...simply outrageously delicious.”

Antonio Galloni's  
**vinous**

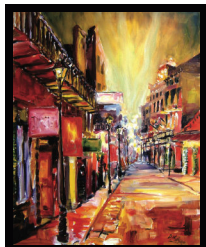
**95**  
POINTS

**SENSUOUSLY RICH.**  
**VIBRANT. LIVELY.**  
**PLENTY OF SPICE...**

...JUST LIKE THE CITY  
IT'S NAMED AFTER.

SINCE  1989

*Fess Parker*



## THE BIG EASY

2016 RHÔNE STYLE RED  
Santa Barbara County

“ Rich, powerful and flamboyant to its core the Big Easy hits the palate with tremendous fruit intensity. Super-ripe red cherry, raspberry jam, white chocolate, vanillin and new American oak shape this opulent Syrah/Petite Sirah/Grenache blend...simply outrageously delicious.”

Antonio Galloni's  
**vinous**

**95**  
POINTS

**SENSUOUSLY RICH.**  
**VIBRANT. LIVELY.**  
**PLENTY OF SPICE...**

...JUST LIKE THE CITY  
IT'S NAMED AFTER.

SINCE  1989

*Fess Parker*



## THE BIG EASY

2016 RHÔNE STYLE RED  
Santa Barbara County

“ Rich, powerful and flamboyant to its core the Big Easy hits the palate with tremendous fruit intensity. Super-ripe red cherry, raspberry jam, white chocolate, vanillin and new American oak shape this opulent Syrah/Petite Sirah/Grenache blend...simply outrageously delicious.”

Antonio Galloni's  
**vinous**

**95**  
POINTS

**SENSUOUSLY RICH.**  
**VIBRANT. LIVELY.**  
**PLENTY OF SPICE...**

...JUST LIKE THE CITY  
IT'S NAMED AFTER.